

Pathology Service

The Histopathology service at Barts Cancer Institute offers a full range of histological techniques for its staff, researchers across Queen Mary University of London, and external customers.

Processing Tissues

- Cutting sections of paraffin and frozen tissues.
- H&E staining (automated)
- Automated Immunohistochemistry (Ventana Discovery, classic and XT)
- Optimisation of antibodies
- Some special staining protocols
- Hotel service for cryostat and microtome
- Training and advice

Equipment



Ventana Classic and XT



Leica Processor

<http://www.bci.qmul.ac.uk/research/lab-facilities/pathology>

Pathology Service



Leica RM2255 Microtome

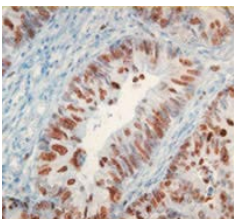


Leica CM3050S Cryostat

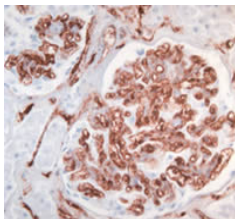


Leica Autostainer and Coverslipper CV5030

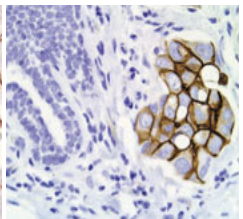
Staining



Ki67 on Mouse Colon



Cd34 on Mouse Kidney



Anti HER-2 on Human
Breast Cancer